

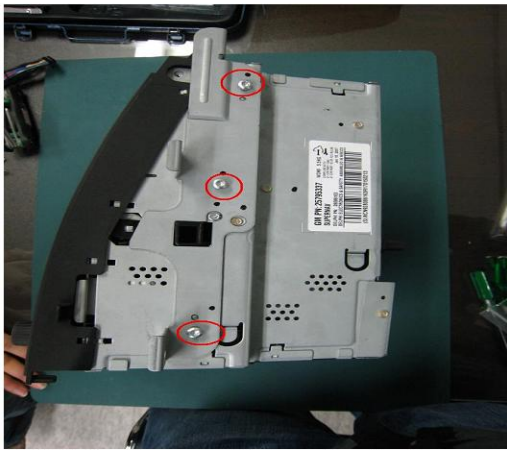
Cadillac Escalade Video Interface

it is for cadillac Escalade / EXT / ESV from 2007 up version.
with two AV input and output, RGBS input and output, auto rear camera switch functions.

STEP 1: Take off molding from the Cabinet above the passenger seat.

Take off the cover around the monitor.

Disassemble 7mm bolts then take out the monitor.



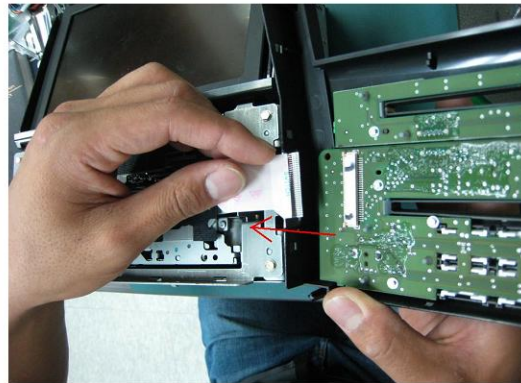
STEP 2: Screw off the star bolts
front of the monitor.

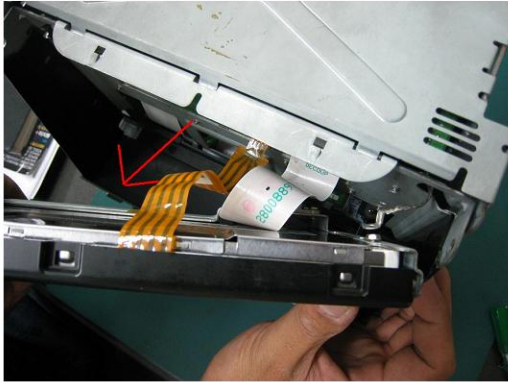


STEP 3: Take out the Plastic cover
in front.

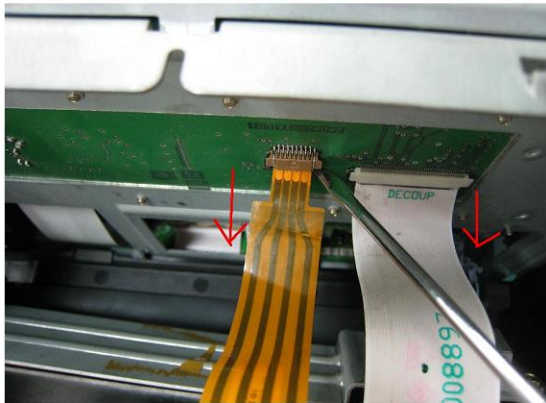


STEP 4: Separate the film cable.

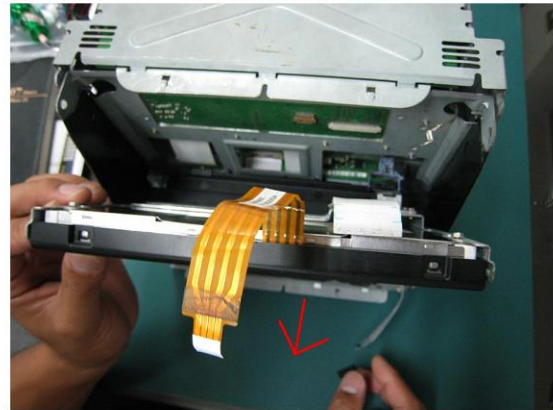




STEP 5: Disassemble LCD.



STEP 6: Separate the Original film cable.



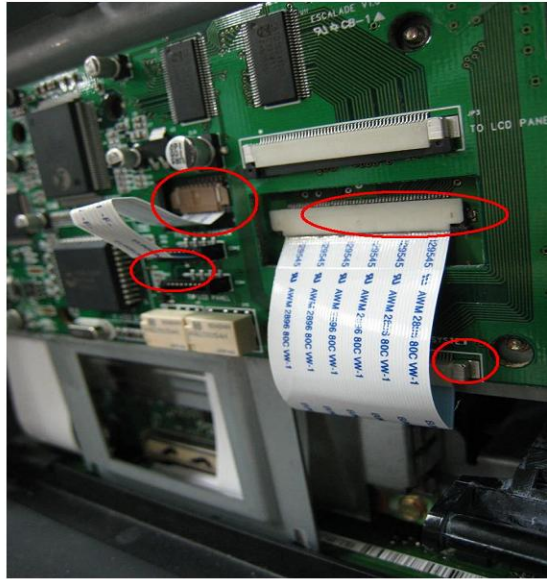
STEP 7: Disassemble LCD.



STEP 8: Slot supplied Cable in to the disassemble place.



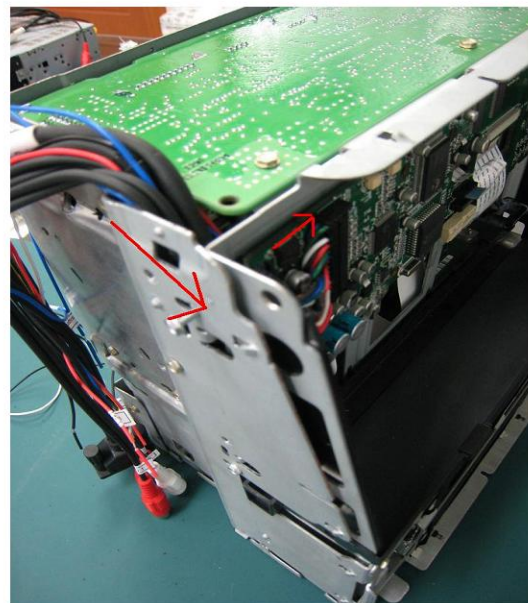
STEP9: Attach the INTERFACE.



STEP 10: Take out the Supplied Cable like the picture and connect them.



STEP 11: Take out the cover above the monitor.



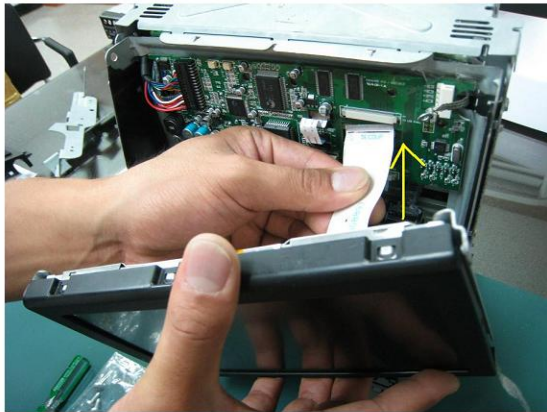
STEP 12: Put the connected cable into the hole as shown the picture.



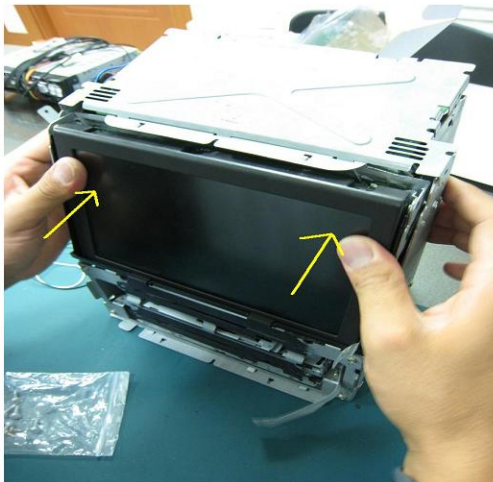
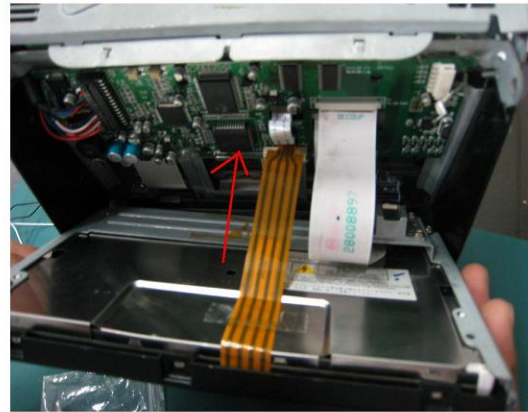
STEP 13: Put the connected cable as shown the picture.



STEP 14: Assemble the Cover.



STEP 15: Connect the Original Cable like the picture.



STEP 16: Assemble the monitor.



(DVB-T)



(NAVIGATION)

Test unit to see if factory display Shows on the screen.

Select between the different sources to see, if unit shows different inputs.

Before you completely re-install the unit into the dash, it is a good time to adjust the menu display settings.

*** After connections are made.**

- First, test unit to see if factory display shows on the screen. Then select between the different sources to see, if unit shows different inputs. Before you completely re-install the unit into the dash, it is a good time to adjust the menu display settings.

**** Warnings**

- We are not responsible for any damages due to misuse if the Interface. Be very careful to avoid any possible damage to the car. Read the installation guide before you start the installation.
- Turn off all the power supplies while connection the Video Connector. It can damage the monitor and unit if you try to install the interface while the KEY is in the ON position.